

---

**FUJI LABS** ™

**MP4 Player Manual**

**User Guide**



---

## Statement

1. Without obtaining permission from our company, any forms of copying, transferring, distributing or storing of any contents in this manual are prohibited.
2. In composing this manual we have tried our best to keep the contents correct and complete, though some mistakes and omissions may be unavoidable. We are not responsible for such mistakes or omissions.
3. We reserve the right to revise and improve the described products in this manual without prior notification.
4. Under any circumstances, we are not responsible for the loss of any data or income, or any special, occasional, incidental or indirect losses, no matter how these losses were caused.

---

## Notice

This chapter is made to help the users properly use the player and ensure the best performance of the player. Please read carefully and comply with the following warnings:

**1.Please make sure to upload media files completely before disconnecting. Failure to do so will lead to file corruption and system crashes or shutdowns.**

**2.Please note that this player does not support files encrypted with DRM 9 or DRM 10. These are usually the type of files that are downloaded from MP3 Pay Sites.**

3.Please make sure to scan all files for viruses before uploading files. Uploaded files with viruses may crash and permanently damage this unit.

4:Don't delete or add a playlist or label when playing.

5. Keep away from high temperature (above 35□ ) or low temperature (under -5□ ).

- 
6. Never strike this MP3 player.
  7. Never use benzene, thinner, or other chemicals to clean.
  8. Never operate when close to intense magnetic/electric fields.
  9. Keep away from direct sunlight or heated instruments.
  10. Never try to dismantle, repair, or reconstruct this unit.
  11. When riding a bicycle, driving a car or motorbike, never use the player and the earphone to avoid the accidents.
  12. Never listen to music at a high volume to avoid hearing loss.
  13. Properly dispose of the retail packaging, batteries, and old electronic parts.

## Table of Contents

Basic functions.....	7
Connecting with a PC .....	8
System configuration requirements.....	8
Preparation before use	
Keys introduction.....	10
Keying definition.....	10

---

Charging and open/close.....	11
Low battery.....	11
Files storing.....	12
Main application interface.....	12
Volume tuning.....	13
Guidance setting.....	13
Music mode	
Main menu introduction.....	16
Submenu introduction.....	18
Playing interface introduction.....	19
Basic operation.....	20
Picture mode	
Main menu introduction.....	25
Submenu introduction.....	28
Basic operation.....	29
Video mode	
Main menu introduction.....	31
Submenu introduction.....	32
Basic operation.....	33
Recording mode	
Main menu introduction.....	35

---

---

Submenu introduction.....	36
Main recording interface introduction.....	37
Basic operation.....	38
FM mode	
Main menu introduction.....	39
Submenu introduction.....	40
FM main interface introduction .....	41
Basic operation.....	42
Text reading	
Main menu introduction.....	44
Submenu introduction.....	45
Basic operation.....	46
Games and tools	
Games.....	47
Tools.....	50
Data interaction	
Main menu introduction.....	52
Submenu introduction.....	52
Copying operation.....	52
Setting	
Main menu introduction.....	44

---

---

Submenu introduction.....	45
Basic operation.....	46
Firmware upgrading	
Q& A.....	57
Ex-factory setting.....	57
Specification introduction.....	58

## **Basic functions**

1. Music playing: for MP3, WMA, OGG, APE, FLAC, and WAV forms.
2. Recording: for FM and MIC recording. It supports MP3 and WAV forms.
3. Pictures browsing: for pictures in JPEG, BMP, and GIF forms.
4. Video playing: for XVID form.
5. FM Radio function.
6. Supports text and document reading of TXT files.
7. Games: Russian Square, Snake, Push Box.
8. Tools: Calendar, stopwatch, and calculator.

- 
9. Supports MicroSD expansion card.
  10. Settings: Setting or changing all function features.
  11. Supports ADFU restoring and USB upgrading.
  12. Supports data interaction and data protection.

### **Connecting to a PC**

#### **● System configuration requirement**

Operating system: Windows XP/2000/ME/98(with drive)/Linux 9 or above/MAC OS 10

CPU: Minimum Pentium-133 MHz

Memory: at least 2 MB

Required hard disk space: at least 100 MB

Video card: 640\*480 or above, with 16 bit color.

#### **● Connecting to a PC**

Connect PC and the player with using USB wire. The player displays the following interface:



## USB Flash Drive - USB interface

When it shows “U disk” or “USB charging”, press the “PREV” or “NEXT” key to see the different options.

1. When “U disk” is highlighted, press OK to enter into U disk mode.  
The files in the player may be copied and deleted from the PC.  
Press “ESC” to exit. The music list is automatically renewed and before returning to the main interface.
2. When “USB charging” is highlighted, press OK to charge.

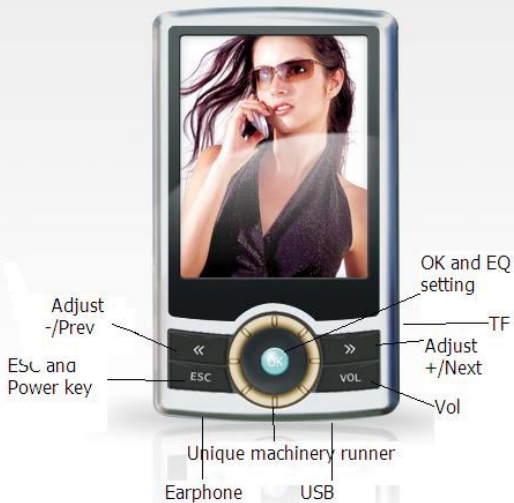


Note: When charging with USB, the “POWER” key must be in the “ON” position.

### **Preparation before use**

---

● **Key introduction**



- 
1. POWER: Power switch
  2. OK: Short press: play, pause, confirm; long press: enter into submenu
  3. NEXT: next song, forward, to next menu column.
  4. PREV: last song, backward, to last menu column.
  5. VOL+: volume up
  6. VOL-: volume down
  7. ESC: open/close, exit

### ● Keying definition

1. Short Press: press time less than 1.2 seconds 。
2. Long press: press time more than 1.2 seconds.
3. Press without stop: press this key with keeping this state



Note: without special interpretation, “press” in this manual refers to short press.

### ● Charging and open/close

1. Charging

---

Make sure the “POWER” switch is in the ON position otherwise your player will not be charged.

## 2. Close

Under open state, long press “ESC” key, close the system.

When the system spare time reaches the close time set by the user, the player is closed automatically.



Note: when the player connects with the PC, this function is useless.

## 3. Open

Under close state, long press “ESC” key to open the system.

Connect the player with PC, the system is automatically opened.

### ● **Low battery**

When the battery is low on power, a “low battery” warning picture will be displayed. The machine will then automatically shut down, and enter into the “Stand by” state. Do not restart the unit under

---

such circumstances. Please charge the unit in timely manner.

### ● **Storing Files**

Store files of different types under different directory folders. For example: music files under MUSIC, recording files under RECORD, picture files under PICTURE, video files under TXT. If the files are not stored according to these requirements, the corresponding applications will be useless.

### ● **Main application interface**

Under the main interface, press “NEXT” or “PREV” to see different options. Press “OK” to select the highlighted option. Hold the “OK” key to enter into the submenu for volume adjustment, press “ESC” key to return to main interface.

### ● **Volume adjustment**

#### 1. Volume adjustment under function interface

When playing any media (FM, music, video), you may press “VOL+”

---

and “VOL-” to adjust the volume; press “OK” key to return to playing interface. Under the picture + music interface, adjust the volume in the same way.

## 2. Volume adjustment under menu mode

Under menu mode, hold the “OK” key to enter into the <volume> submenu, press the “OK” key to enter into volume adjustment. Using the “VOL+” and “VOL-” keys, you can adjust the volume; press the “OK” key to return to main interface.

## ● **File Browser setting**

This function allows you to browse all of the files and folders on the disk and select and play all recognizable files under any folder.

### 1. Corresponding with interface

Press “OK” to enter into interface for folder selection. If file protection is not enabled, you will see two options: <main catalogue>, <card catalogue>; if file protection is enabled, it displays three options: <main catalogue>, <card catalogue>, <protection list>. Press

---

the “NEXT” or “PREV” key to see different options. Press the “OK” key to select highlighted options until finding the wanted file.

## 2. Detailed operation

### \*Play files

From recoding, FM and video application enter into file browsing and select a file, enter into music playing interface and play this file. Press “ESC” to return to <playing> list. From pictures, text reading, games and tools mode, setting application enter into file browsing, select music file, play this file as background music.

### \*Play video file

From any application interface enter into file browsing mode and select a video file; enter into the video playing interface to play in full-screen, press “ESC” to return to <playing> list,

### \*Play picture file

From any application interface enter into file browser and select the

---

picture file, enter into the picture displaying interface and the file will display in full-screen. Press “ESC” to return to the <playing> list.

**\*Play text file**

Under any application interface enter into file browsing and select the text file, enter into the text reading interface and it will display in full-screen. Press “ESC” to return to first interface of text application.

**Music mode**

**● Main menu introduction**

Under the main application interface select <music> and enter into the main menu interface of music mode. Press the “NEXT” or “PREV” key to see different options, press the “OK” key to enter into next menu.

\*Playing: Select a song from the list and press “OK” to start playing.

\*All songs: This is a list of all music files stored under the MUSIC folder.

---

\*Singer: This displays a list of singers according to the ID3 tag information on your song files. Select a singer, and the next menu will show you all the songs listed under this artist.

\*Album: This displays a list of albums according to the ID3 tag information on your song files. Select a album, and the next menu will show you all the songs listed under this album.

\*Genre (School): This displays a list of the music genre's according to the ID3 tag information on your song files. Select a genre, and the next menu will show you all the songs listed under this genre.

\*Play list: Displays 5 playing lists. Select one list, and the next menu will display the songs of this list.

\*Folder list: Displays two options: main catalogue, card catalogue. Main catalogue is catalogue of the main area of the player, listing contents under MUSIC. Card catalogue lists songs in your flash card. If the card is not inserted, this option is empty. Press "OK" key to return to last menu.

---

\*Recording file: Displays all recoded files



Note: these files are stored under RECORD

\*Label: display all songs lists with time labels, altogether 32 lists maximum

\*Level: Displays 5 level lists (1-5 levels). Select corresponding levels, press “OK” key to enter into next level, displaying songs lists of this level.

### ● **Submenu introduction**

The submenu has three types:

#### 1. The interface under main menu mode

Hold the “OK” key to enter into the submenu, consisting of <recycling mode>, <EQ setting>, <repeating times>, <repeating interval >, <volume>.

#### 2. The interface under songs lists

Hold the “OK” key to enter into the submenu, including <recycling mode>, <EQ setting>, <repeating times>, <repeating interval>.

---

<remove>, <add to playing lists>, <volume>.

### 3. The interface in song playing mode.

Hold the “OK” key to enter into submenu, including <recycling mode>, <EQ setting>, <repeating times>, <repeating interval>, <repeating mode>, <variable-speed playing>, <remove>, <add to playing lists>, <detailed information>, <add labels>, <incoming and outgoing >, <volume>.



Note: under the above submenu, press the “NEXT” or “PREV” key to see different options, press the “ESC” key to return to the previous level.

### ● **Playing interface introduction**

In the songs list, select a song and press “OK” to enter into the songs’ playing interface. There are three modes: common mode, level setting mode, words mode. If the current song has no words, it will not display any song mode. Press “OK” key to shift between different modes.

---

The following diagram shows the playing interface in common mode:



If it is not under state of A-B repeating mode, no repeating mode icons will be displayed; if the current song has no words, no word icons will be displayed; if the variable-speed playing is set as 0, no variable-speed playing icons will be displayed.



Note: this mode doesn't permit simultaneous playing of music and

---

FM function.

● **Basic operation**

1. Playing, pause

When playing songs, press “OK” to shift between play and pause.

2. Forward, Rewind

Under playing interface of common mode, when the songs are played or paused, hold “NEXT” or “PREV” to fast forward or rewind.

3. Songs skipping

Under playing interface of common mode, press “NEXT” or “PREV” to skip between songs.

4. Playing mode setting

Under submenu, if it is highlighted as <recycling mode>, press “OK” key to enter into menu interface of playing mode. Press “NEXT” or “PREV” to see different options, press “OK” key to select the highlighted option and return to last level. The

---

playing mode has: in turn, repeat one song, repeat all songs, random and browsing.

## 5. EQ selection

Under the submenu, highlight <EQ setting> and press “OK” to enter the EQ settings menu, press the “NEXT” or “PREV” key to see different options. For the first 7 options, press “ESC” to select the highlighted option and return to last level; for SRS WOWHD, press “OK” key to enter into next level. When it is highlighted as user mode, press “OK” to enter into the setting menu of user mode, press “NEXT” or “PREV” to adjust the settings of all options, press “ESC” to store the set value and return to last level; for SRS WOWHD, the corresponding values under user mode are: 8, 8, 5, 4, 6, 100MHZ, disable; if SRS WOWHD is disabled, the EQ setting enters into natural mode.

## 6. Repeating times

Under submenu, highlight<repeating times>and press “OK”.




---

Press “VOL+” or “VOL-” to adjust the repeating times value from 1 to 10, press “ESC” to store the set value and return to last level.

#### 7. Repeat interval

The operation method of this setting is same with that of < repeating times >, with a interval range of 1-6 seconds.

#### 8. Repeating mode

Under submenu, highlight <repeating mode> and press “OK” to enter into repeating mode. The interface displays: , waiting for confirmation of A point. Press “NEXT” to displays: , waiting for confirmation of B point. Press “NEXT” to displays icon 3: , starting the A-B repeat. Press “NEXT” to cancel A-B repeating. Press “PREV” to return to last state. Press “PREV” to cancel A-B repeating if you are at the first icon..

#### 9. Play setting

Under submenu, highlight <variable-speed playing>, press “VOL+” or “VOL-” to adjust the playing speed value from -4 to 4, Press

---

“ESC” to store the setting and return to last level.



Note: this variable-speed playing only applies to MP3 and WAV songs. The playing speed will return to normal on the next song.

## 10. Incoming and outgoing

Under submenu, when it is highlighted as <incoming and outgoing>, press “VOL+” or “VOL-” to shift between state of open and close. Press “ESC” to store the setting and return to last level.

## 11. Removal

Under submenu, highlight <remove>, press “OK” to enter into removal interface. Press “NEXT” or “PREV” to skip between “confirm” and “cancel”.



Note: Under label lists, the remove function only deletes the label records, which only deletes the song from the play list instead of actual file.

## 12. Adding to playing lists

Under submenu, highlight <add to playing lists>, press “OK” to

---

enter into list interface, press “NEXT” or “PREV” to see different lists, press “OK” to select this list and return to the last level. The song will be added to this list.

### 13. Songs information display

Under submenu, highlight <detailed information>, press “OK” to enter display the song information. Re-press “OK” or “ESC” to return to playing interface.

### 14. Adding labels

Under submenu, highlight “add labels”, press “OK” to add the current song and time point into the label lists and return to playing interface.

### 15. Multi-task mode

Under music playing state, press “ESC” to return to main application interface, then select picture browsing, text reading or other applications.

### **Picture mode**

---

- **Main menu introduction**

Under main application interface, select “picture” and enter into main menu interface of pictures. Press “NEXT” to see different options, press “OK” to confirm entering into next menu containing these options: <picture list>, <browsing manner>, <playing manner>, <slides interval >.

1. Picture list

Select picture files in accordance with different types.

- **Playing**

Will display the current picture list and highlight pictures being displayed. Press “OK” to display the pictures.

- **Folder list**

Display two options: main memory catalogue, flash memory card catalogue. Main catalogue is catalogue from the main area of the player, listing contents under PICTURE. Highlight a file and press “OK” to play. Card catalogue lists picture contents in a flash

---

memory card. If a card is not inserted, this option is empty. Press “OK” to return to last menu.

- Protection list

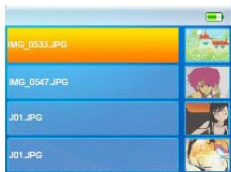
This list stores files using an encryption disk. If there is no encryption disk, this list is empty. After selecting, next menu directly enters into browsing mode. Select one file, press “OK” to enter into full-screen playing interface.

## 2. Browsing mode

Set display manner of picture lists.

- Files list

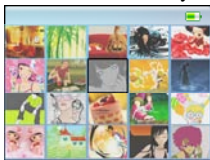
Display pictures in list mode. Press “OK” to return to the previous level. Under file mode, press “NEXT” or “PREV” to see files, such as the following diagram:



---

- Thumbnail display

Displays pictures as a thumbnail diagram. Press “OK” to return to the previous pagel. Under this kind of mode, press “NEXT” or “PREV” to see the files horizontally. Press “NEXT” or “PREV” to see the files vertically, like the following diagram:



### 3. Playing mode

Select the desired picture playing mode.

- Manual play

Select manual mode. Under a full-screen playing state, press “NEXT” or “PREV” to skips files. It is regarded as manual mode.

- Slideshow mode

Select slideshow mode and picture files will be played in

---

full-screen like a slideshow.

#### 4. Slide interval

Adjust the time interval between slides. Press “VOL+” or “VOL-” to adjust this interval, ranging from 1-10 seconds.



Note: if the actual decoding time of pictures is longer than the set slide interval, the unit will automatically use this time as the interval.

#### ● **Submenu introduction**

● There are three types of submenu:

##### 1. The interface under menu mode

Hold “OK” to enter into the submenu, where the <volume> option is.

##### 2. The interface under picture browsing mode

When browsing files under non-encrypted catalogues, hold the “OK” key to enter into the submenu, including <remove>, <file protection>, <volume>.

When browsing files under protective catalogues, hold “OK” to

---

enter into the submenu which includes <remove>, <cancel protection>, <volume>.

### 3. The interface under pictures playing mode

Hold “OK” to enter into the submenu which includes <rotate>, <scaling>, <detailed information>, <remove>, and <volume>.



Note: under the above submenu, press “NEXT” or “PREV” to see different options, press “ESC” key to return to last level.

## ● Basic operation

### 1. Playing, pause

Under browsing mode, press “OK” key to play the picture, press “ESC” key to stop playing. When playing this picture, press “OK” to display the playing speed.

### 2. Removal

The function is same as in the interval mode.

### 3. File protection

Files protection moves current files or file folders under PICTURE

---

to the encrypted disk. During the process, if there is not enough space, the player will display “full space”; if the encrypting disk is not set up, it will display “no encrypting disk”.

Canceling protection moves the current files to the main area from the encrypting disk. During the process, if the space of main area is full, it displays “full space”. Under submenu, highlight <files protection> or <cancel protection>, press “OK” key to initiate this action.

#### 4. Rotating

Under the submenu, highlight <rotate>, press “OK” to enter into the next interface. Select desired rotating angle, press “OK” to return to the playing interface and rotate the pictures.

#### 5. Scaling

Under the submenu, highlight <scaling>, press “OK” to enter into the next interface. Press “VOL-” or “VOL+” to reduce or enlarge a photo. Press “OK” as confirmation. Start area browsing state.

---

Press “NEXT”, “PREV”, VOL-”, or “VOL+” to adjust the picture browsing area. Press “OK” to return to normal playing mode.



Note: Scaling and rotating functions are useless for GIF format pictures. The scaling function is useless for pictures less than 320\*240 pixels.

## 6. Pictures information

Under the submenu, highlight <pictures information>, press “OK” to enter into the next interface. It displays the related information of the current picture.

## **Video mode**

### ● Main menu introduction

Under the main application interface select <video> to enter into the main menu interface of video function. Select video files. Press “NEXT” or “PREV” to see different options. Press “OK” to enter into the next menu.

## 1. Playing

---

Select one video file, press “OK” to start playing in full-screen.

## 2. Catalogue list

It lists two options: main catalogue, flash card catalogue. Main catalogue is the list of files in the main memory of the player, listing contents under VIDEO. Select one video file, press “OK” to make play in full-screen. Card catalogue lists contents in the flash memory card. If the card is not inserted, this option is empty. Press “OK” to return to previous level.

## 3. Label list

It lists all video files with labels. There can be 32 label lists maximum.

## 4. Protection list

It stores video files on the encrypted disk. If a encrypting disk is not set, this list is empty. Select one file, press “OK” to play in full-screen.

## ● Submenu introduction

---

The submenu has three types:

1. The interface under menu mode

Hold “OK” to enter into the submenu. It has one option: <volume>.

2. The interface under files browsing mode

When browsing files under non-protective catalogues, hold “OK” to enter into the submenu. It has three options: <remove>, <files protection>, <volume>. When browsing files under protective catalogues, press “OK” to enter into the submenu. It has two options: <cancel protection> and <volume>.

3. The interface under video playing interface

Hold “OK” to enter into the submenu. It has five options: <remove>, <playing mode>, <add labels>, <detailed information>, <volume>.



NOTE: Under the above submenu, press “NEXT” or “PREV” to see different options. Press “ESC” to return to the previous page..

---

## ● Basic information

### 1. Playing, pause

Under video playing mode, press “OK” to shift between playing and pausing.



Note: This mode doesn't support the multi-tasking function.

### 2. Forward, Reverse playing

Under the playing interface, when the file is played or paused, press “NEXT” or “PREV” to make the unit fast forward rewind.

### 3. File skipping

Under playing interface, press “NEXT” or “PREV” to skip files.

### 4. Playing mode setting

Under the submenu, highlight <playing mode>, press “OK” to enter into playing mode and select the menu interface. Press “NEXT” or “PREV” to see different options, press “OK” to select highlighted option and return to the previous page. The playing

---

mode has the following options: in turn, repeat one song, repeat all songs, random, and browsing.

## 5. Adding labels

Under the submenu, highlight <add labels>, press “OK” to add current file into the label list and return to the playing interface.

## 6. Files information

Under the submenu, highlight <detailed information>, press “OK” to enter into the display interface for file information. Press “OK” again or “ESC” to return to the playing interface.

## **Recording mode**

### ● Main menu introduction

Under the main interface select <recording> to enter into the main menu interface of the recording function. Press “NEXT” or “PREV” key to see different options. Press “OK” to enter into the next page.

## 1. Recording

Select this option and press “OK” to enter into recording interface

---

and start recording.



Note: This mode doesn't support the multi-task function.

## 2. Recording format

This option sets the recording format of the file. Press “NEXT” or “PREV” to see different options, press “OK” to confirm.

## 3. VOR support

It automatically tests external sound. During the recording process, when there is no sound, it stops recording and restarts when sound appears. Press “OK” to select which option.

### ● **Submenu introduction**

The submenu has two types:

#### 1. The interface under menu mode

Hold “OK” to enter into the submenu. It has one option: <volume>.

#### 2. Under the recording interface

Hold “OK” to enter into the submenu. It has one option:

---

<volume>.

During the process of recording, if there is no spare space, it displays a “full space” warning, then stores the recorded file, and returns to the pause state.

### ● **Basic operation**

Recording, pause, stop

Under recording interface, press “OK” to select which state of recording to be in. Press “OK” key to store the recording and enter into stop state.

### **Radio (FM) mode**

#### ● **Main menu introduction**

Under the main application interface, select <FM> to enter into the main menu interface of radio function. Press “NEXT” or “PREV” key to see different options. Press “OK” to enter into the next page.

#### 1. Listening to radio

Select this option, and you will enter into the FM main interface.

---

The current station frequency is the frequency last used.

## 2. Station list

A list of stations that are stored will be displayed. Select one and press “OK” to enter into the FM interface. There is a maximum of 20 presets.

## 3. Station wave band

The station wave band can be set to the Euro-American wave band: 87MHz-108MHz, or Japanese wave band: 76MHz-90MHz. Press “OK” to select.

## 4. Stop

Select this option. Press “OK” to stop playing the current station.

### ● **Submenu introduction**

This submenu has three types:

#### 1. The interface under menu mode

Hold “OK” to enter into the submenu. It has one option: <volume>.

#### 2. The interface under station list

---

Hold “OK” to enter into the submenu. It has <remove>, <remove all> and <volume>.

### 3. The interface under FM main interface

Hold “OK” to enter into the submenu. If the current station is included in the station list, the submenu has <automatic search>, <remove>, <recording quality> and <station recording>; if current station is not included in the station list, the submenu has <automatic search>, <store station>, <recording quality> and <station recording> options.

#### ● **FM main interface introduction**

Under main interface, press the “OK” key to shift between the main interface and the interface of the station list.



Note: this mode doesn't support simultaneous playing of music and FM.

#### ● **Basic operation**

- 1. Automatic search for station

---

Under the submenu, highlight <automatic search>, press “OK” to automatically search for stations. After the search, it will renew the station list, and play the first station in the station list.

## 2. Manual search

Under FM main interface, press “NEXT” or “PREV” to adjust the current frequency upward and downward. Hold “NEXT” or “PREV” to make a manual search. Stop to play after finding the right station.

## 3. Mute

Under the FM main interface, short press “OK” to enter into mute mode, press again to start playing.

## 4. Storing the station

To store the current station, select <store station> in the submenu, and press “OK”. The current station is kept in the station list.

## 5. Removing station

Under the submenu, highlight <remove>, press “OK” to remove the current station from the station list; if it is highlighted as <remove

---

all>, press “OK” to empty the station list.

#### 6. Recording quality setting

Under the submenu, highlight <recording quality>, press “OK” to enter into the next menu. The station recording uses MP3 format, as well as three different sampling rates: 64kbps/128 kbps /256kbps.

#### 7. Station recording

Under the submenu, highlight <station recording>, press “OK” to enter into the station recording interface. The following recording operation is the same as that of the recoding mode.



Note: under this interface, press “OK” to store the recorded file and return to the FM interface.

#### 7. Multi-task mode

When FM is playing, select pictures, text reading, and other applications, FM will go on playing.

### **Text reading mode**

#### ● Main menu introduction

---

Under the main application interface, select <text reading> and enter into the main menu interface of text reading. Press “NEXT” or “PREV” to see different options. According to different types, select text files.

### 1. Reading

Press “OK” to directly enter into the reading interface. The reader will remember where you left off last time.

### 2. Catalogue list

Catalogue list: displays two options: main catalogue, flash card catalogue. Main catalogue is catalogue of main memory area of the player, listing contents under the TXT folder. Find a file, and press “OK” to play. Card catalogue lists text contents in the flash memory card. If there is no card inserted, this option is empty. Press “OK” to return to the last menu.

### 3. Label list

It displays text file lists. Select one file and press “OK” to enter

---

into the reading interface, start reading from the stored page.

#### 4. Protection list

It has the same functions with those of the protection list under picture mode.

#### 5. Automatic reading interval

Press “VOL+” or “VOL-” key to adjust the automatic reading interval, which has a range of 5-30 seconds.

#### ● **Submenu introduction**

The submenu has three types:

##### 1. The interface under menu mode

Hold “OK” and enter into the submenu. It has one option: <volume>.

##### 2. The interface under browsing mode

When browsing files under non-protective catalogues, hold “OK” to enter into the submenu. Options include: <remove>, <files protection>, <volume>.

When browsing files under protective catalogues, hold “OK” to

---

enter into the submenu, including <remove>, <cancel protection> and <volume>.

### 3. Text playing interface

Hold “OK” to enter into the submenu. It has three options as <remove>, <add to labels> and <volume>.



Note: under the above submenu, press “NEXT” or “PREV” to see different options. Press ESC key to return to last level.

## ● Basic operation

### 1. Playing, pause

Under browsing mode, press “OK” to play the text file. If the playing mode is manual, press ESC key to exit from the playing interface; if the playing mode is automatic, press the ESC key to stop playing, press it again to exit from the playing interface.

### 2. Removal function

It is same with the removal operation under music mode.

### 3. File protection, canceling

---

It is same with the files protection and canceling operation under picture mode.

#### 4. Playing mode setting

Under text reading interface, press “OK” to change the playing mode, respectively as manual playing mode and automatic mode.

#### 5. Adding labels

It is same with the operation under music mode.

### **Games and tools**

#### ● **Games**

- Under main application interface, select <games and tools> to enter into the main menu interface of games and tools functions. Press “NEXT” and “PREV” to see different options. Select <games>, press “OK” key to enter into next level.

#### ● **Russian Square**

Select Russian Square, press “OK” to enter into the games interface. Press “NEXT” or “PREV” keys to see different options,

---

press “OK” key to confirm.

#### 1. New games

Select this option, start a new game.

#### 2. Setting

Select this option to set the game speed and difficulty. Press “NEXT” or “PREV” key to shift the difficulty and the speed-level. Every option has 10 levels. Press “OK” to store the setting and exit.

#### 3. Arranging orders

Select this option to display the arranging conditions. Press “OK” key to exit.

#### 4. Continuing

Select this option to continue the last game. It will ask you to input the name.

#### 5. Key introduction

“OK”: pause, start, confirm

NEXT’: quickly downward

---

“PREV”: shift

“VOL+”: to the right, next row

“VOL-”: to the left, last row

“ESC”: exit, delete

Push Box

Same with Russian Square

Key introduction

“OK”: confirm

“NEXT”: downward, next row

“PREV”: upward, last row

“VOL+”: to the right

“VOL-”: to the left

“ESC”: exit, delete

● Snake

Same with that of Russian Square

Key introduction

---

“OK”: pause, start, confirm

“NEXT”: to the right

“PREV”: to the left

“VOL+”: downward, next row

“VOL-”: upward, last row

“ESC”: exit, delete

### ● Tools

Under the main application interface, select <games and tools> to enter into the main menu interface of games and tools. Press “NEXT” or “PREV” to see different options. Select <tools> and press “OK” to enter into the next page.

### ● Stopwatch

Enter into the stopwatch interface, press “OK” to count the time. press “NEXT” to store the results. You can press next again to start a new timing. 5 timings can be stored in total. During the timing process, press “OK” to pause. Hold “OK” and select <delete> to start

---

new timing.

- Calculator

Enter into calculator interface, do operation as follows:

“OK”: confirm

“NEXT”: next row

“PREV”: last row

“VOL+”: to the right

“VOL-”: to the left

“ESC”: exit

- Calendar

Enter into the calendar interface, operate as follows:

“OK”: display confirm interface, confirm the input

“VOL+/VOL-”: adjust the month, adjust the detailed value

“NEXT/PREV”: adjust the date, adjust the options

“ESC”: exit



Note: In the operation of the above tools, you may hold “OK” at

---

any time to enter into the submenu and tune the volume.

## **Data interaction**

### ● **Main menu introduction**

Under main application interface, select <data interaction> and enter into the main menu interface of data interaction. It has two options as <main catalogue> and <card catalogue>.

### ● **Submenu introduction**

Under main menu interface, long press “OK” key to enter into the submenu. It has one option as <volume> in the submenu.

Under the main catalogue, hold “OK” to enter into the submenu. It has two options: <copy to card catalogue> and <volume>.

### ● **Copying**

Under the main catalogue, select the file or file holder for copying. In the submenu select <copy to card catalogue>, press “OK” and copy the corresponding file to the card. If there were errors during the copy process, the warning “fail copying” will be shown.

---

## Setting

### ● Main menu introduction

Under main application interface, select <setting> to enter into the setting function. Press “NEXT” or “PREV” to see different options.

Press “OK” to enter into the next page.

### ● Submenu introduction

Hold “OK” and enter into the submenu. It has one option :<volume>.

### ● Basic operation

#### 1. Information display

Under main menu, select <information>, and enter into next page which displays the system information. Press ESC key to return to the previous page.

#### 2. Main menu configuration

Under the main menu, select <main menu configuration>, enter into next page and press “NEXT” or “PREV” to see different

---

options. Press “OK” to shift between “open” and “close”. “Close” is not displayed in the main application interface. Press ESC to return to the previous page.



Note: the setting is in open state instead of close by default.

### 3. Display setting

In the main menu, select <display setting> and enter into the next interface. Press “NEXT” or “PREV” to see different options. Press “VOL+” or “VOL-” to adjust the option value, press ESC to return to last level.

- Back-lighting time

This option sets the back-lighting time before dimming. The range is from 0-60 seconds. 0-second stands for no auto-dimming.

- Brightness

This option sets the brightness of the back-lighting. The range is from 0-5.

### 4. Playing list name revising

---

Under main menu, select <playing list name revising>. Enter into the next page which displays 5 playing lists under music application. Press “NEXT” or “PREV” to see different options. Press “OK” to enter into the numerical keyboard. From here you can revise the name, select the “√” key for storing and exit. Press ESC to delete. The keys operation is as follows:

“OK”: confirm input

“NEXT/PREV”: right/left

“ESC”: delete

“VOL+/VOL-”: last row/next row



Note: the setting option is always on instead of off.

## 5. Date and time

Under the main menu select <date and time>, enter into the next menu page and press “NEXT” or “PREV” to see different options. Press ESC to return previous page.

### ● Adjusting time

---

This option set the system time. Press “OK” to enter into the time setting interface. Press “NEXT” or “PREV” to see different options. Press “VOL+” or “VOL-” to adjust the option value. Press “OK” to store the setting and exit.

- Hour system

Press “OK” to set the hour system as 24-hour or 12-hour.

- Display time on title bar

Press “OK” to shift between “ON” and “OFF” to set whether to display the time information in the title bar or not.

## 6. Player setting

Under main menu select <player setting> and enter into the next menu page. Press “NEXT” or “PREV” to see different options. Press ESC to return to last level.

- Owner

This options displays information about the user. Press “OK” to enter information through a numerical keyboard. You can revise the

---

name and other options.

- Off time

This option set the auto-off option when in a stop state. The setting range is from 0-60 seconds. Press “VOL+” or “VOL-” to adjust the option value, press ESC to store and exit.

- Card inserting initialization

This option allows you to format your flash memory card. Press “OK” and it ask you “whether to format this card”. Press “confirm” and it will start formatting. If there is no card, it gives a note “no card”.

## 7. Language support

Under the main menu, select <language support> and enter into the next menu page. This system supports English, Simplified Chinese, and Traditional Chinese. Press “NEXT” or “PREV” to see different options. Press “OK” to change the system language, press ESC to return to the previous page.

---

## 8. Encrypting disk

Under the main menu select <encrypting disk>, enter into the next menu page. If the encrypting disk is OMB, the next page will show an option for volume adjusting. If encrypting disk is not OMB the next page will show volume adjusting, protection file setting, and password revising settings. Press “NEXT” or “PREV” to see different options, press ESC to return to last level.

### ● Volume adjusting

Press “VOL+” or “VOL-” key to adjust the volume of the encrypted disk. If the volume is 0, press “OK” to bring up the interface for entering in a password. Press “OK” to display a numerical keyboard. Input the correct password and the interface will ask you if you would like to “format whole player”. Select “confirm” to format the disk; select “cancel” to exit. The default password is: 000000.

### ● Protection file setting

Press “OK” to enter into next interface. Select <conceal> and the

---

<protect list> will not be displayed in pictures, video and text reading applications. Select <display> and press “OK” to display the interface for inputting a password. Input the correct password to display the <protect list>.

- Password revising

Set the new password.

- Reset

Press “OK” and the player will ask you “whether to restore the ex-factory setting”. Select “confirm” to reset all applications to their default state.



Note: In the <setting> application, play music or FM, press “OK” to pause.

## Q & A

1. The player doesn't work. The screen displays no content.

- \*Check battery levels.

- \*Examine ON/OFF settings.

---

2. Failure in formatting the flash memory card.

\*Check that the card is inserted properly

3. Copying failure.

\*Non-existent destination

\*Destination is not formatting

\* Not enough space

4. Forgetting the password of an encrypting disk.

\* Adjust the encrypting area as 0, reformat the disk

#### **Factory Default settings**

song level	0-level
Playing mode	In turn
EQ mode	Natural
Pictures browsing mode	Thumbnail browsing
Pictures playing mode	Manual mode
Slides interval	2 seconds

---

Recording form	WAV form
VOR support	Close
Station frequency	87MHz
Station wave band	Euro-American wave band
Automatic reading interval	5 seconds
Back-lighting time	0 second
Back-lighting brightness	3
Owner's name	Unknown
Off time	0 second
Pause time	0 minute
Protection file setting	Conceal

---

## Specification introduction

Memory volume	512M
Battery	4.2V lithium
Work voltage	4. 2V
SNR (signal to noise ratio)	88db
FM distortion degree	0. 5%
Flashing display screen	320*240 QVGA 260,000-color TFT-screen
Size	71*40*15 (mm)